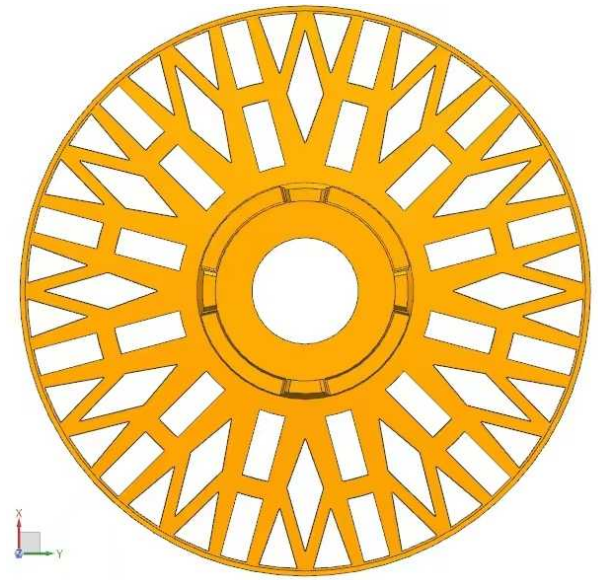


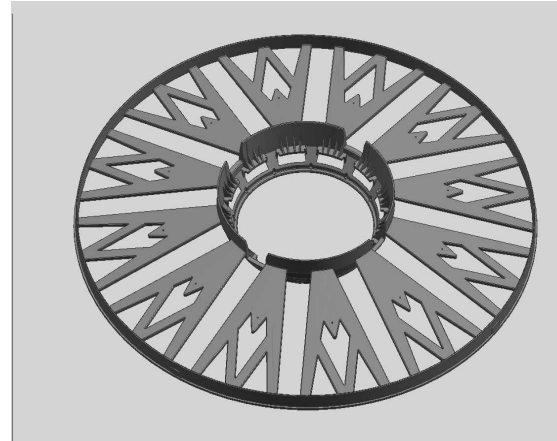
Bead Apex Separator



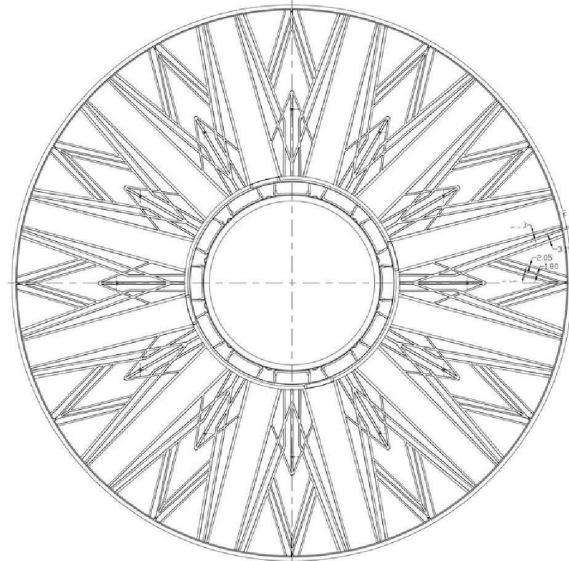


PCR Tire Bead Apex Separators - Steamer Type

prototype



**SIZE: Ø 780
Ø 680**



**New Design:
Better mechanical performance;
Aesthetic appearance**

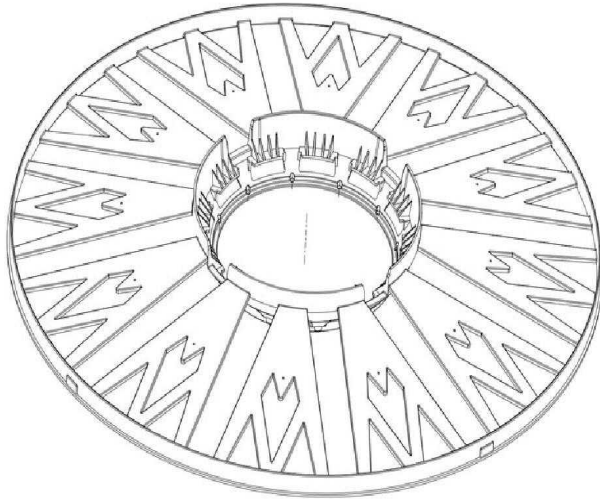
Technical Standards

- When stacking tire beads, the deflection of the top separator shall be ≤ 0.5 mm, and its lateral swing around the center shall be $\leq 1^\circ$.
- Load capacity: 2 kg per piece, without deformation
- The manipulator grips from the top; individual units separate freely without adhesion.
- Material: ABS

Products from domestic competitors are identical to the original prototypes, posing a risk of intellectual property disputes.



PCR Tire Bead Apex Separators - Steamer Type

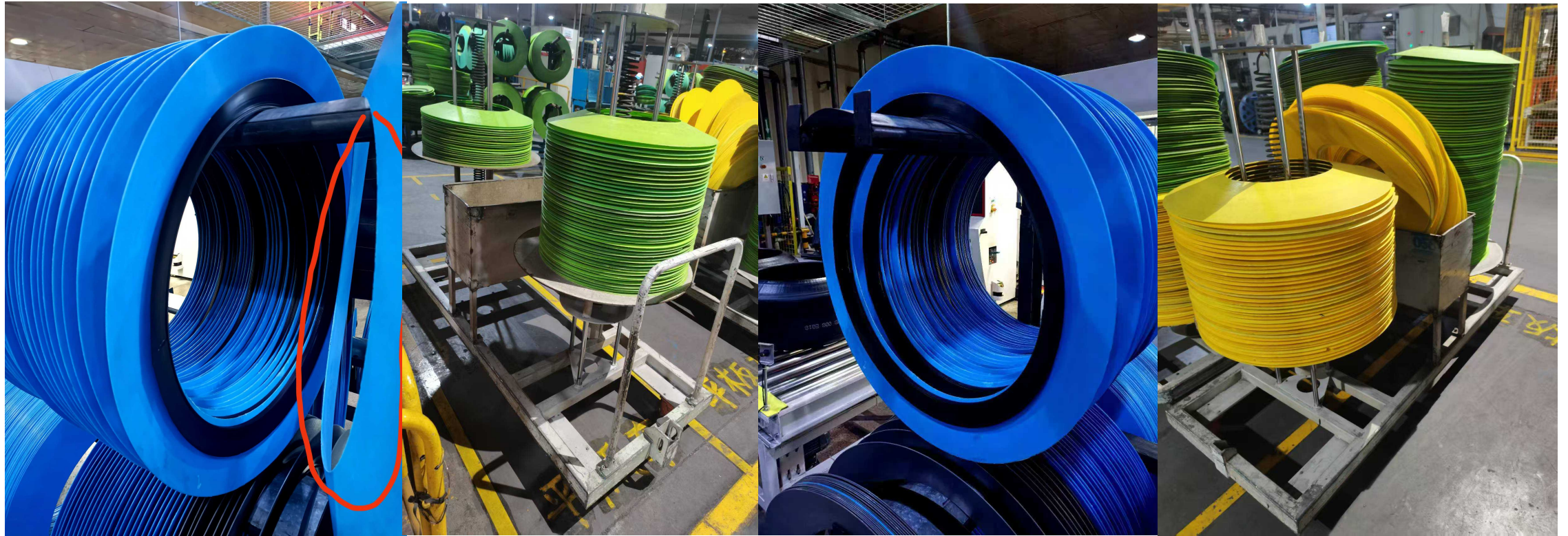


Advantages:

- ❑ **Improved Quality:** hollow stacking design is adopted to completely solve issues such as folding, extrusion deformation of apex beads, as well as parts falling off.
- ❑ **Improved Efficiency:** suitable for automatic gripping by manipulators, automatic transportation by AGV, and automatic bead feeding in the tire building process.
- ❑ **Versatility:** suitable for all passenger tire (PCR) sizes; fully compatible with the products of the same specifications.
- ❑ **Featuring a patented unique appearance design, avoiding intellectual property disputes.**



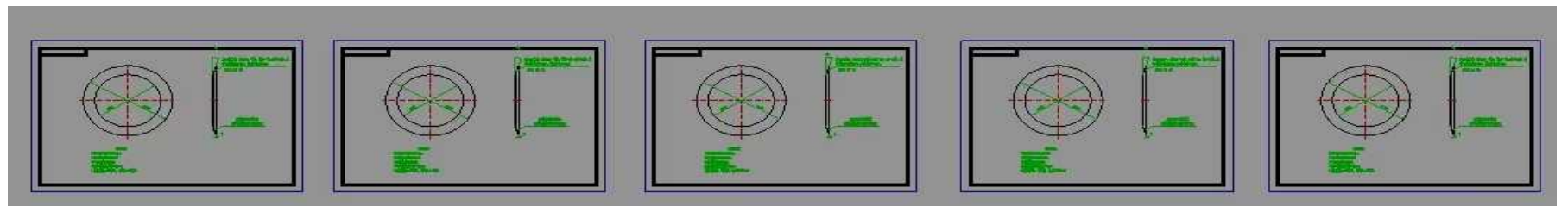
PCR Tire Bead Apex Separators - Curved sheet



13"/14"	15"/16"	17"/18"	19"/20"	21"/22"	13"/16"	17"/20"
φ 510- φ 320	φ 580- φ 378	640-φ434	φ685-φ488	φ700-φ535	φ580-φ320	φ660-φ420

Technical Features:

- ❑ Tensile and Tear Strength $\geq 34\text{MPa}$
- ❑ Static Bending Strength $\geq 51\text{MPa}$
- ❑ Impact Strength $\geq 32\text{MPa}$
- ❑ Inner & outer rounded edges 0.5mm
- ❑ Color: customizable by customer





PCR Tire Bead Apex Separators - Curved sheet

PCR Apex Separators 17"-20"

PCR Apex Separators 13"-16"

< 半钢三角胶隔板17"-20" ...

< 半钢三角胶隔板13"-16" ...

16°r
此面印凸字，内容：生产日期(年**月)字高10mm

2401

技术要求

1. 抗拉断裂强度≥34Mpa
2. 静弯曲强度≥51Mpa
3. 冲击强度≥32Mpa
4. 内外周边倒角0.5mm
5. 隔板颜色：灰色，色号RAL7036

16°r
此面印凸字，内容：生产日期(年**月)，字高10mm。

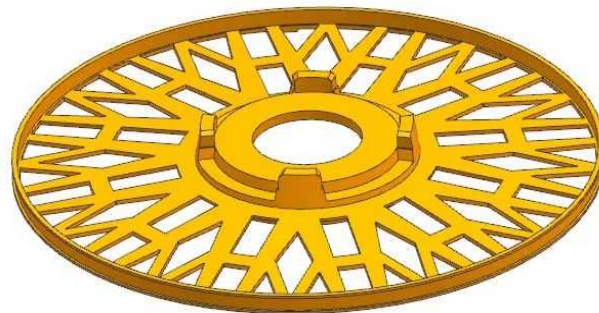
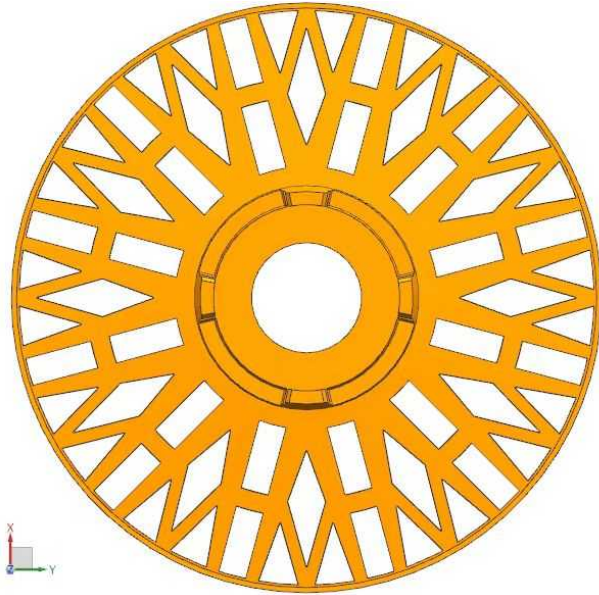
2401

技术要求

1. 抗拉断裂强度≥34Mpa
2. 静弯曲强度≥51Mpa
3. 冲击强度≥32Mpa
4. 内外周边倒角0.5mm
5. 隔板颜色：灰色，色号RAL7001
6. 表面去毛刺



TBR Tire Bead Apex Separators - Steamer Type



Design Concept: Excellent mechanical properties, aesthetic appearance, and independent design patent to avoid intellectual property disputes.

- **Improved Quality:** hollow stacking design is adopted to completely solve issues such as extrusion deformation of apex beads, as well as parts falling off.
- **Load capacity:** 6 kg per unit, without deformation.
- **The manipulator grips from the top; individual units separate freely without adhesion.**
- **Material:** ABS